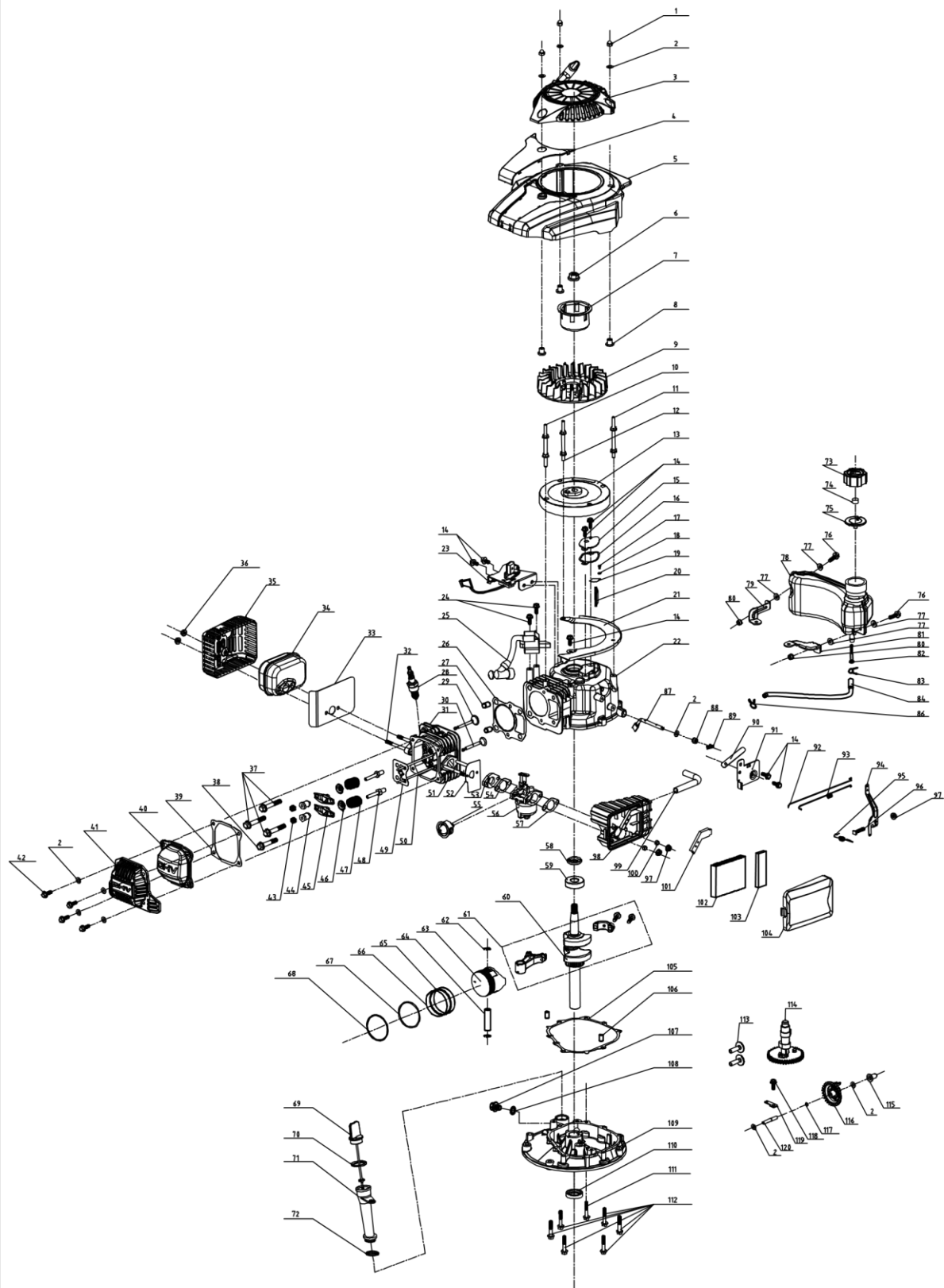


Part No.	Discription in English	Q-ty
1	Foam Pipe	1
2	B Type Self-propelled Lever	1
3	Stop Lever	1
4	B Type Upper Handrail	1
5	Hex Locknut M6/8.8	5
6	Hex Flange Face Bolt	1
7	Cap type NUT	1
8	Rope Guide	1
9	plug for Handrail	2
10	lower Handrail (L)	1
11	Carriage Bolt M8x50/8.8	2
12	Flat Washer(8.5X16X1.5)	2
13	knob	2
14	Hexangular Nut M8/8.8	2
15	lower Handrail(R)	1
16	Fastener	1
17	Cable Fixing Clamp	1
18	protective board for top cover for plastic bag	1
19	top cover for Plastic Bag	1
20	cap nut M5	2
21	Cross Recess Pan Head Tapping Screw M5X10	2
22	Lower Cover of Plastic Bag	1
23	Cross Recess Pan Head Tapping Screw ST/3.5X18	6
24	Shaft for Discharge Cover	1
25	Baffle	1
26	spring for Discharge Cover	1
27	Rear Discharge Cover	1

28	Mulching Plug	1
29	Rear Baffle	1
30	Cross Recess Pan Head Tapping Screw	8
31	Brake Cable	1
32	Self-propelled Cable	1
33	Hex Flange Face Bolt	2
34	height adjustment ball	1
35	Flexible Washer	1
36	Transmission Assy	1
37	height adjustment	1
38	Self-propelled Spring	1
39	right board	1
40	Transmission Assy	1
41	Washer	2
42	Inner Cover for A Type 7" Wheel Hub	2
43	Punching Bearing	4
44	II Type Hex Locknut M4	4
45	Big Washer	4
46	Big Straight Gear	2
47	7" Wheel Assy	2
48	Small Washer	4
49	Flexible Washer	4
50	Outside Cover for 7" Wheel Hub	4
51	Small Straight Gear(Ratchet Wheel R)	1

52		2
53	Small Straight Gear(Ratchet Wheel L)	1
54	Pin	2
55	Ratchet Wheel Washer	2
56	Rear drive shaft socket	2
57	left board	1
58	Split Pin	2
59	Height Adjustment Pull Rod	1
60	deck assy	1
61	Hex Flange Face Bolt	1
62	Hex Flange Face Bolt	6
63	V Type Belt	1
64	Small Belt Wheel	1
65	Belt Cover	1
66	Long Key for Crankshaft	1
67	Washer for Blade Adapter	1
68	Bush for Belt Cover	2
69	Blade Adapter	1
70	17" Blade	1
71	Blade Washer	1
72	Hex Flange Face Bolt	1
73	front drive assy	1
74	6 inch A type wheel assy	2
75	Washer	2

76	Hex Flange Face Bolt	2
77	T100 Engine	1
78	Hex Flange Face nut	2



no.	english description	Qty
1	Cap nut	3
2	Gasket	10
3	starter assy.	1
4	decoration board	1
5	Blower Housing	1
6	Hex flange nuts	1
7	starter hub	1
8	Blower Housing Bush	3
9	fan	1
10	Special bolt I	1
11	Special bolt II	1
12	Special bolt III	1
13	flywheel assy	1
14	Bolt	7
15	Respirator Cover Plate Assy	1
16		1
17	cross recessed small Pan head screw	1
18	spring washer	1
19	espirator spring steel valve element	1
20	oil filter net	1
21	Blower board	1
22	crankshaft box assy.	1
23	detent assy.	1
24	Bolt	2
25	ignition assy.	1
26		1
27	spacing pin	2
28	spark plug	1
29	IntakeValve	1
30	Exhaust Valve	1
31	cyclinder head assy.	1
32	Dual-head bolts	

33		
34	muffler assy.	
35	muffler cover assy.	
36	Self-locking nut	
37	locking bolt	
38	locking bolt	
39		
40	cylinder head cover	
41	cylinder head cover	
42	Bolt	
43	And nuts	
44	Valve adjustment nut	
45	Rocker of Valve	
46	Spring Coil of Intake Valve	
47	valve spring	
48	valve rocker arm support bolts	
49	push rod director plate	
50	push rod	
51	Dual-head bolts	
52		
53	Air Inlet Pipe	
54		
55	prime button II	
56	carburetor assy.	
57		
58	oil seal	
59	rolling bearing	
60	crankshaft assy.	
61	connecting rod assy.	
62	Piston Pin circlip	
63	Piston	
64	piston pin	
65	Bushing Ring	

66	Guide Rail	
67	Piston Ring II	
68	Piston Ring I	
69	Lubricating Gauge Assy	
70		
71	inlet fuel pipe	
72		
73	fuel tank cap	
74	fuel tank cap sponge	
75	Fuel Tank Cap seal gasket	
76	Bolt	
77	Cushion Blocking gasket	
78	fuel tank body	
79	right bracket of fuel tank	
80	Self-locking nut	
81	left bracket of fuel tank	
82		
83	fuel pipe lock clamp	
84	inlet fuel pipe	
86	fuel pipe lock clamp	
87	rate-limiting rocker arm shaft	
88	oil seal	
89	R type pin	
90	clip	
91	single phrase throttle assy.	
92	Handspike of Valve	
93	valve spring	
94	throttle rocker arm	
95	valve spring	

96	bolt	
97	Hex flange nuts	
98	Air Filter Pedestal	
99	waste pipe	
100	air fiiler bush	
101	Exhaust Gas Cover Board	
102		
103		
104	Air Filter Upper Cover	
105		
106	spacing pin	
107	Oil drain bolt	
108	Oil drain bolt gasket	
109	Crank box cover	
110	oil seal	
111	Bolt	
112	Bolt	
113	pin	
114	nynon camshaft assy.	
115	Sliding Sleeve	
116	rete-limiting gear assy.	
117	Gear Shaft circlip	
118	Bolt	
119	rate-limiting gear shaft clamp	
120	rate-limiting gear shaft	